

Precision Electric Presents  
**Servo Motor and Drive Repair**



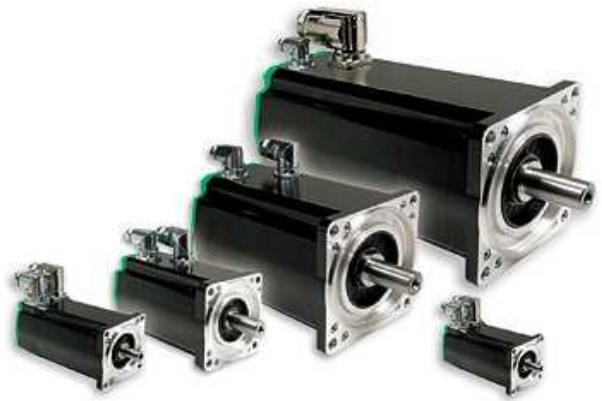
Retrofitting of Outdated  
Servo Motion, PLC and Drive Systems



24/7 Emergency Industrial Automation,  
Electronic and Motor Troubleshooting



Popular Brands of Servo Drive and  
Motor Sales, Repair and Maintenance



Engineering and Documenting of  
Advanced Servo Motion Systems

**“In These Hard Times, You Need Someone You Can Count On.”**

**574.256.1000**

| 1508 West Sixth Street, Mishawaka, IN 46544 | <http://www.precision-elec.com> |

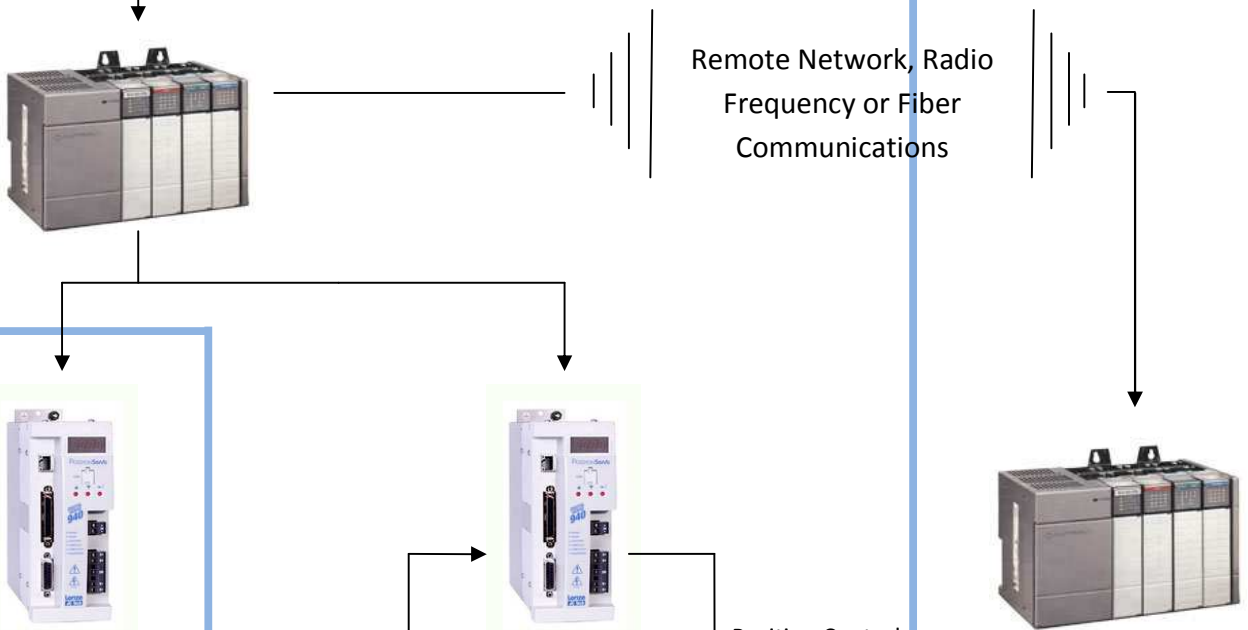
# Sample Servo Motor System

| Level 1: Single Axis System | Level 2: Multi-Axis Systems | Level 3: Multi-axis CNC Control System |  
Utilizes PLCs and Lenze / AC Tech 940 PositionServo Drives

## Level 3



## Level 2



## Level 1

