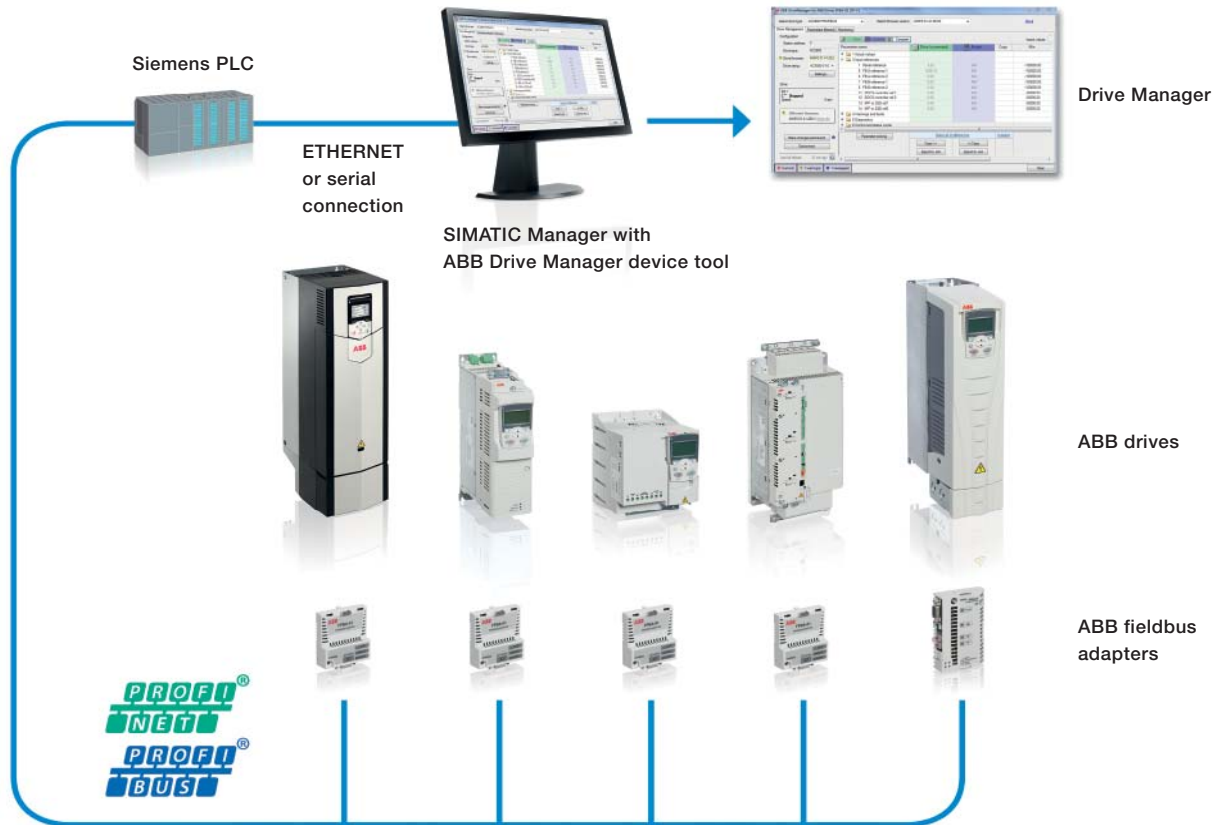


Efficient drive engineering with Drive Manager for SIMATIC device tool



Drive Manager for SIMATIC (DM4S-01) offers machine builders and system integrators a device tool to configure and monitor ABB's low voltage AC drives in the SIMATIC STEP 7 engineering environment. Engineering drives and PLCs in one environment simplifies work, and saves commissioning time and cost.

Drive Manager for SIMATIC is a plug-in device tool that can be easily installed into the STEP 7 and TIA Portal. It utilizes the TCI interface of the SIMATIC PLC to communicate with the drives connected to PROFIBUS or PROFINET network.

The setup enables engineering ABB's low voltage AC drives from the SIMATIC environment without the need for a separate ABB specific PC tool. Drive Manager is also available with ABB's AC500 PLC and included in the Automation Builder engineering environment.

Function block library

ABB offers a function block library to enable easy integration of ABB low voltage drives in the SIMATIC S7 environment. The function block library is available from the ABB website (document number: 3AUA0000099358). The ZIP package includes manuals, examples and GSD files that can be imported to the SIMATIC S7 environment.

Ready-made features to your advantage

Drive Manager for SIMATIC offers several useful features that simplify the setup of ABB low voltage drives used in combination with SIMATIC S7 PLCs including:

- Network connection over PROFIBUS and PROFINET (single point of access)
- Online and offline configuration of drives
- Monitoring of drive actual values
- Export to/import from the drive-dedicated PC tools
- Saving drive parameter settings within the SIMATIC PLC project

System requirements

- Windows 7 32 + 64 bit
- STEP 7 V5.5 SP3 or later
- TIA Portal version 11.0 SP2 or later

Windows XP

- STEP 7 V5.4 SP5

Supported fieldbus networks

- PROFIBUS
- PROFINET

Supported CPUs

- CPU 300 series with DP-V1
- CPU 400 series with DP-V1

Supported drive products

- ACS355
- ACS850
- ACSM1
- ACS880
- ACQ810
- ACS550

Language support

- English and German

Delivery includes

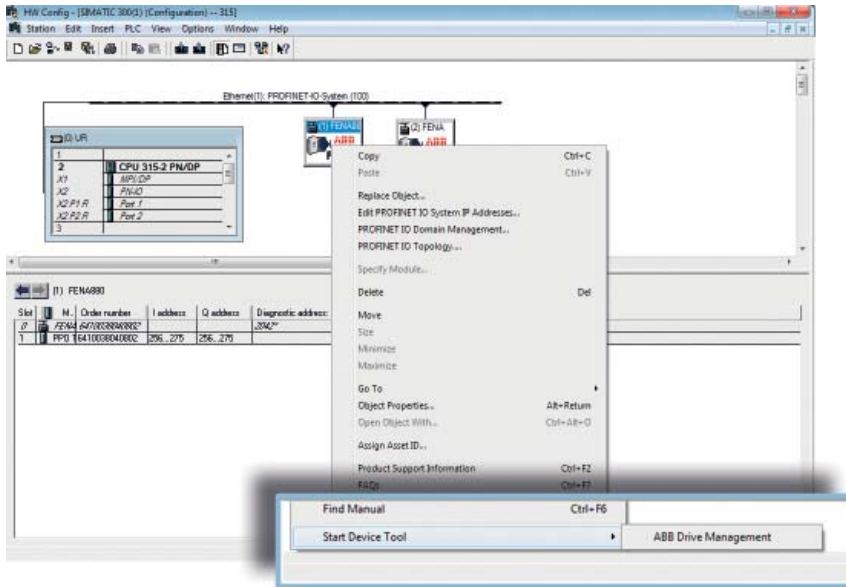
- USB stick with the software and quick startup guide
- Quick installation guide
- License key

For more information please contact your local ABB representative or visit:

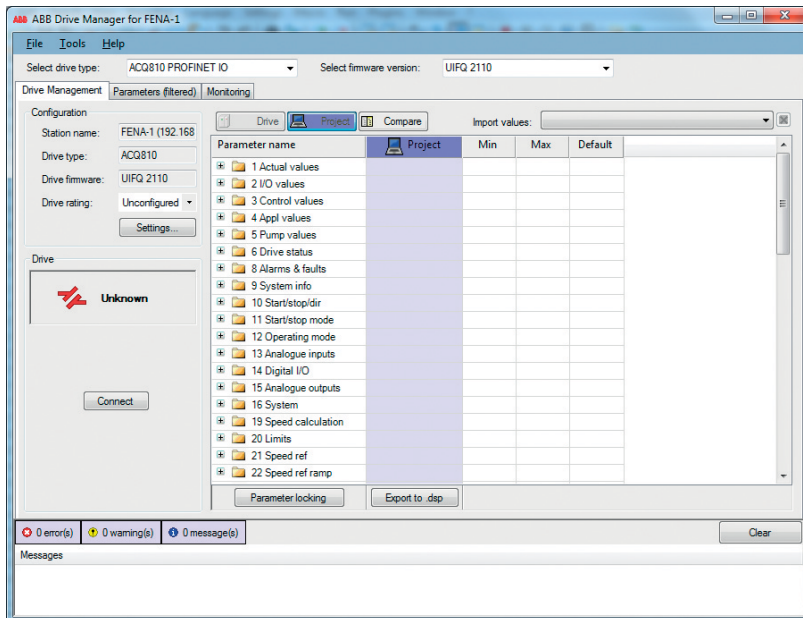
www.abb.com/drives

www.abb.com/drivespartners

© Copyright 2014 ABB. All rights reserved.
Specifications subject to change without notice.



SIMATIC STEP 7 HW configuration.



Drive Manager for SIMATIC.