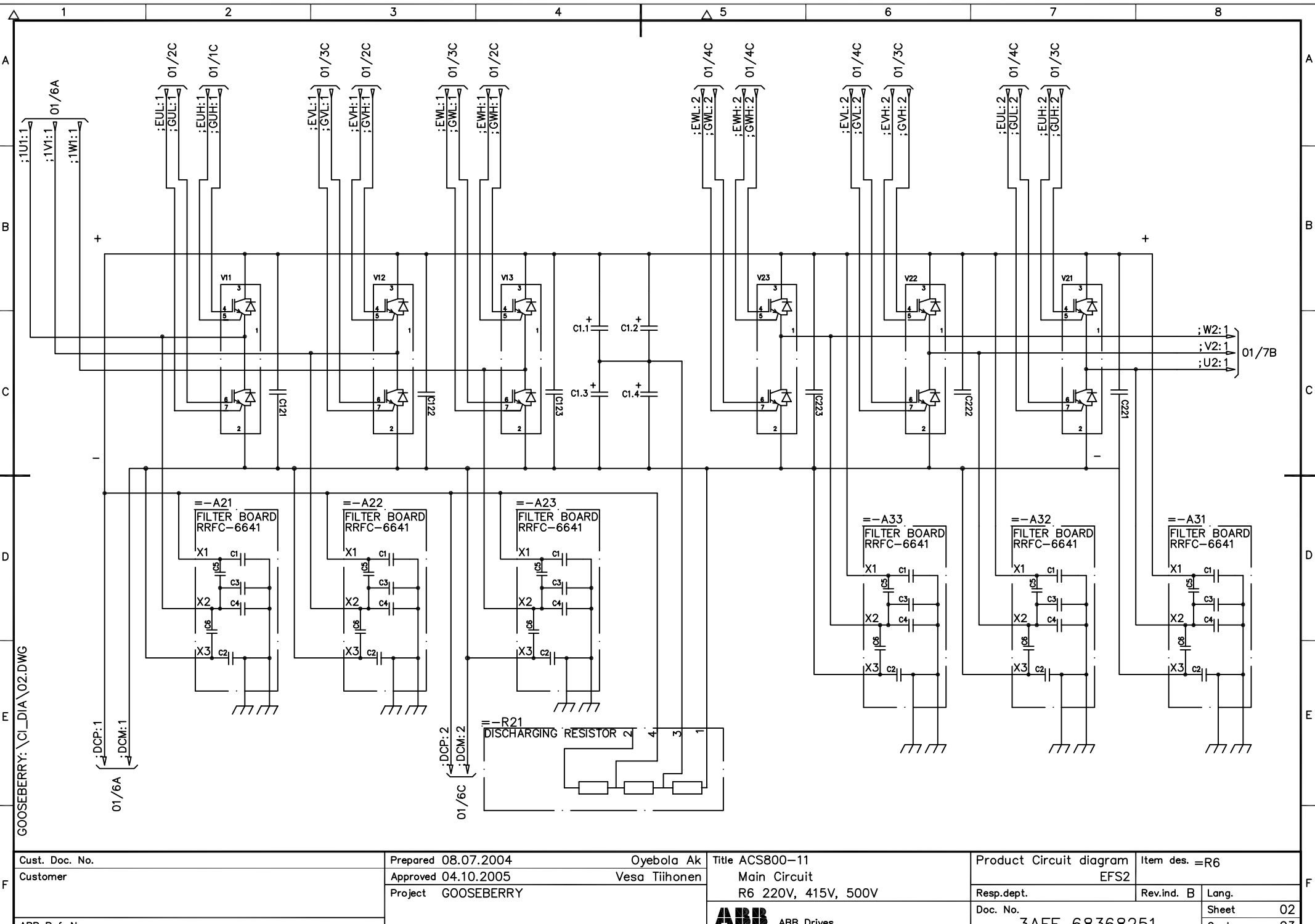



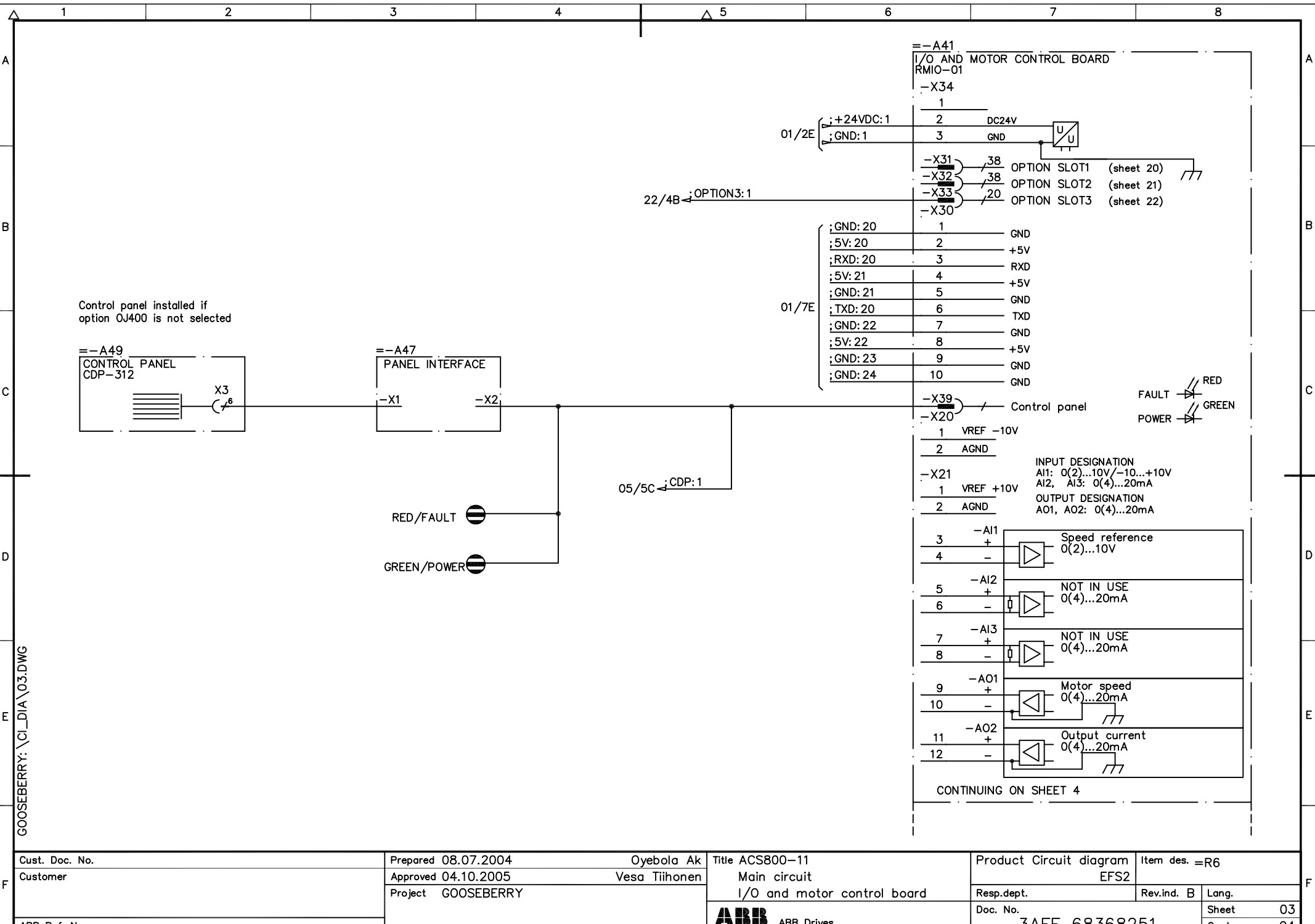


We reserve all rights in this document and in the information contained therein. Reproduction, use or disclosure to third parties without express authority is strictly forbidden. Copr. ABB Automation



F	Cust. Doc. No.	Prepared 08.07.2004	Oyebola Ak	Title ACS800-11	Product Circuit diagram	Item des. =R6		F
	Customer	Approved 04.10.2005	Vesa Tiihonen	Main Circuit	EFS2			
		Project	GOOSEBERRY	R6 220V, 415V, 500V	Resp.dept.	Rev.ind. B	Lang.	
				 ABB Drives	Doc. No.	3AFE 68368251	Sheet 02	
	ABB Ref. No.						03	

We reserve all rights in this document and in the information contained therein. Reproduction, use or disclosure to third parties without express authority is strictly forbidden. Copr. ABB Automation

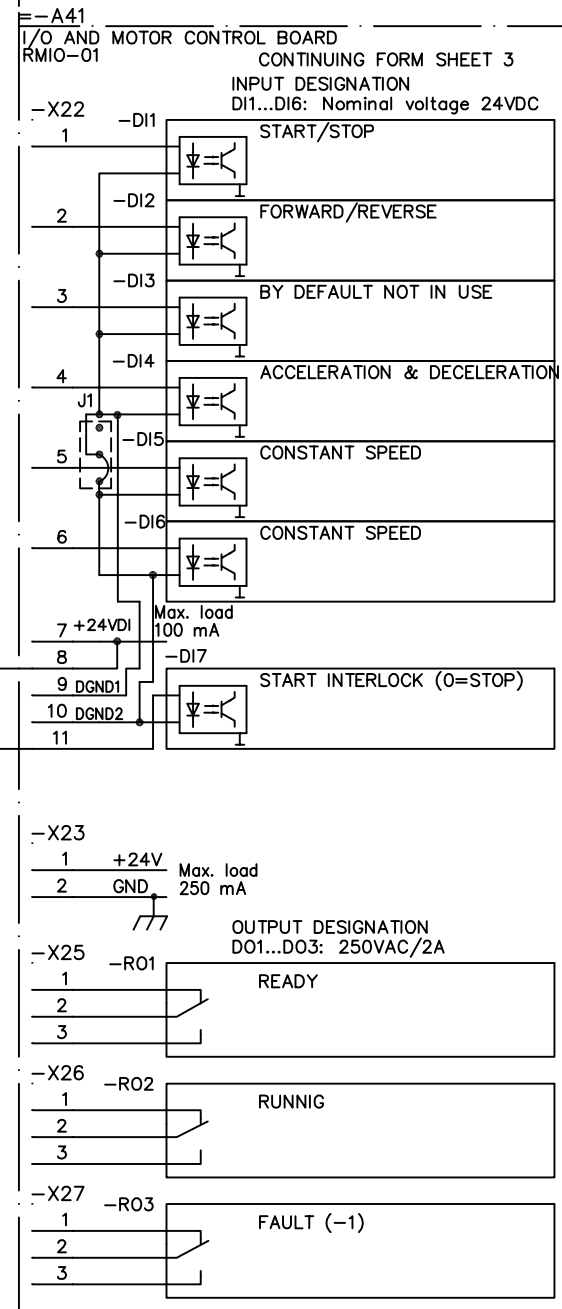


GOOSEBERRY: \CI\_DIA\03.DWG

Cust. Doc. No.	Prepared 08.07.2004	Oyebola Ak	Title ACS800-11	Product Circuit diagram	Item des. =R6
Customer	Approved 04.10.2005	Vesa Tiihonen	Main circuit	Resp.dept.	Rev.ind. B
	Project GOOSEBERRY		I/O and motor control board	Doc. No.	Lang.
ABB Ref. No.				3AFE 68368251	Sheet 03
					Cont. 04

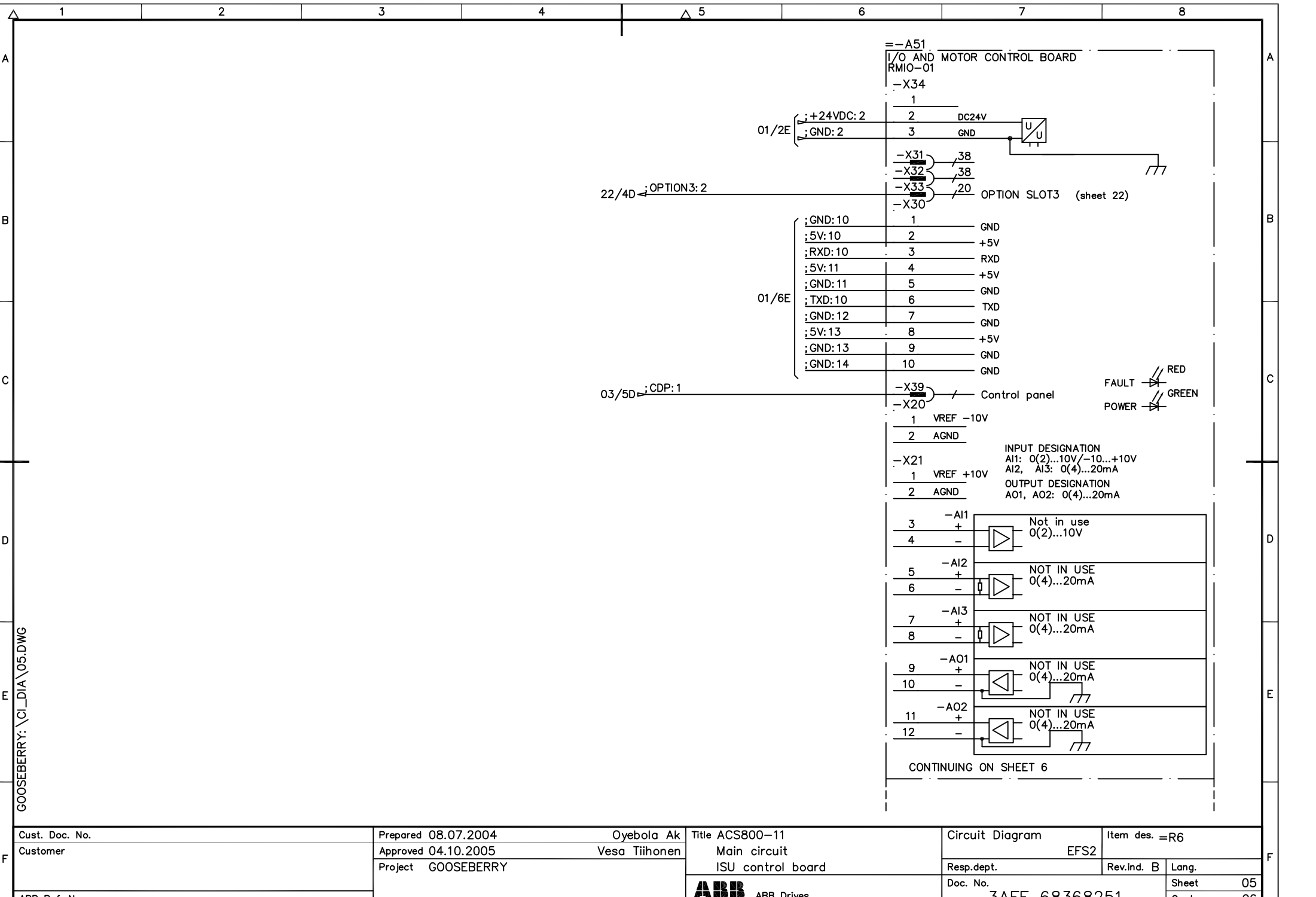
We reserve all rights in this document and in the information contained therein. Reproduction, use or disclosure to third parties without express authority is strictly forbidden. Copr. ABB Automation

GOOSEBERRY: \CI\_DIA\04.DWG



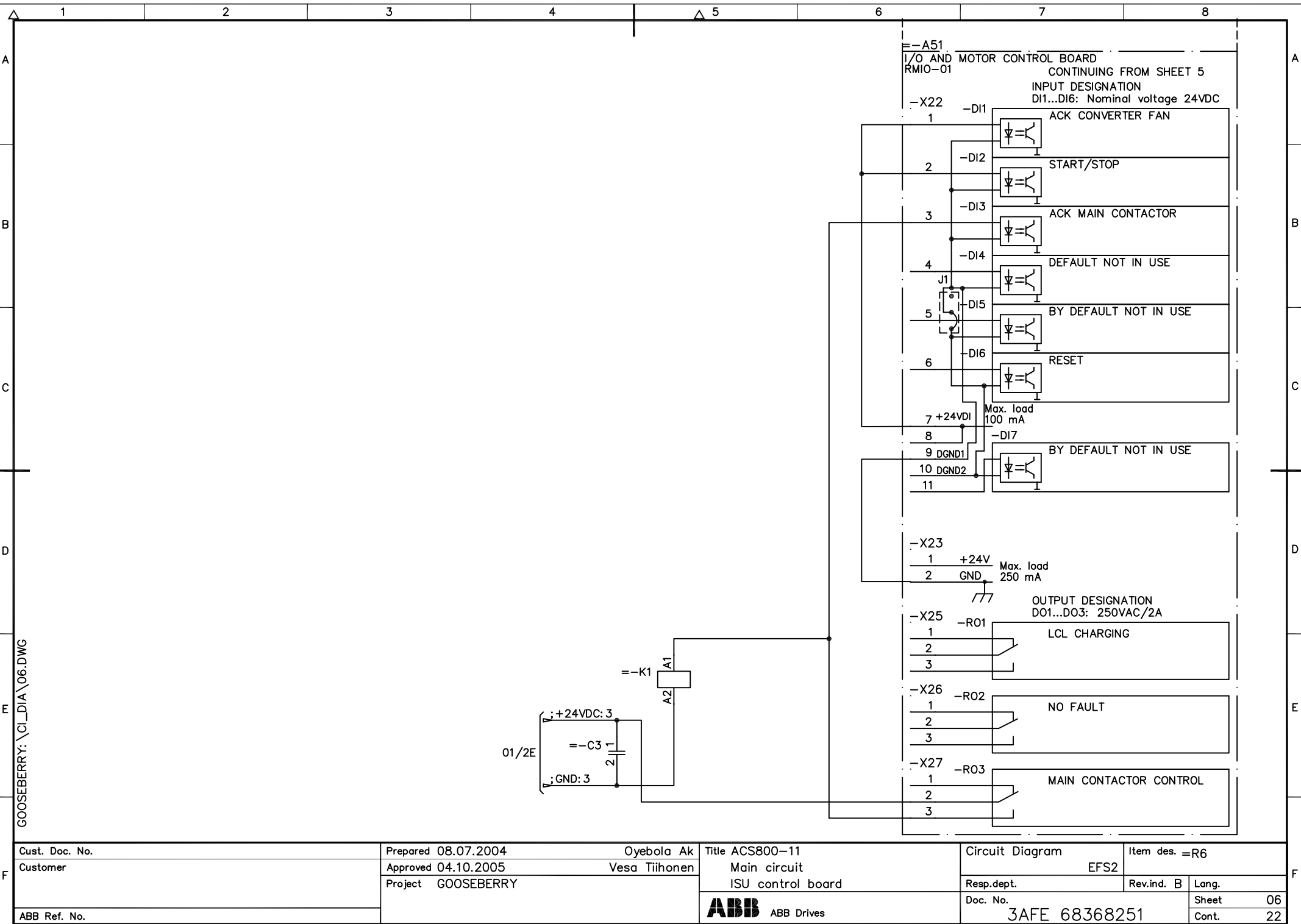
Cust. Doc. No.	Prepared 08.07.2004	Oyebola Ak	Title ACS800-11	Circuit Diagram	Item des. =R6
Customer	Approved 04.10.2005	Vesa Tiihonen	Main Circuit	EFS2	
	Project GOOSEBERRY		I/O and motor control board	Resp.dept.	Rev.ind. B
ABB Ref. No.				Doc. No.	Lang.
				3AFE 68368251	Sheet 04
					Cont. 05

We reserve all rights in this document and in the information contained therein. Reproduction, use or disclosure to third parties without express authority is strictly forbidden. Copr. ABB Automation



GOOSEBERRY: \CI\_DIA\05.DWG

Cust. Doc. No.		Prepared 08.07.2004	Oyebola Ak	Title ACS800-11		Circuit Diagram		Item des. =R6	
Customer		Approved 04.10.2005	Vesa Tiihonen	Main circuit		EFS2		Rev.ind. B	
		Project GOOSEBERRY		ISU control board		Resp.dept.		Lang.	
ABB Ref. No.				ABB Drives		Doc. No.		Sheet 05	
						3AFE 68368251		Cont. 06	



GOOSEBERRY: \CI\_DIA\06.DWG

**I/O AND MOTOR CONTROL BOARD**

CONTINUING FROM SHEET 5

INPUT DESIGNATION  
DI1...DI6: Nominal voltage 24VDC

-X22    -DI1    ACK CONVERTER FAN

         -DI2    START/STOP

         -DI3    ACK MAIN CONTACTOR

         -DI4    DEFAULT NOT IN USE

J1       -DI5    BY DEFAULT NOT IN USE

         -DI6    RESET

7 +24VDI    Max. load 100 mA

8            -DI7    BY DEFAULT NOT IN USE

9 DGND1

10 DGND2

11

-X23    1 +24V    Max. load 250 mA

         2 GND

OUTPUT DESIGNATION  
DO1...DO3: 250VAC/2A

-X25    -R01    LCL CHARGING

         1       2       3

-X26    -R02    NO FAULT

         1       2       3

-X27    -R03    MAIN CONTACTOR CONTROL

         1       2       3

=-K1

A1

A2

O1/2E

+24VDC: 3

=-C3 1

GND: 3

2

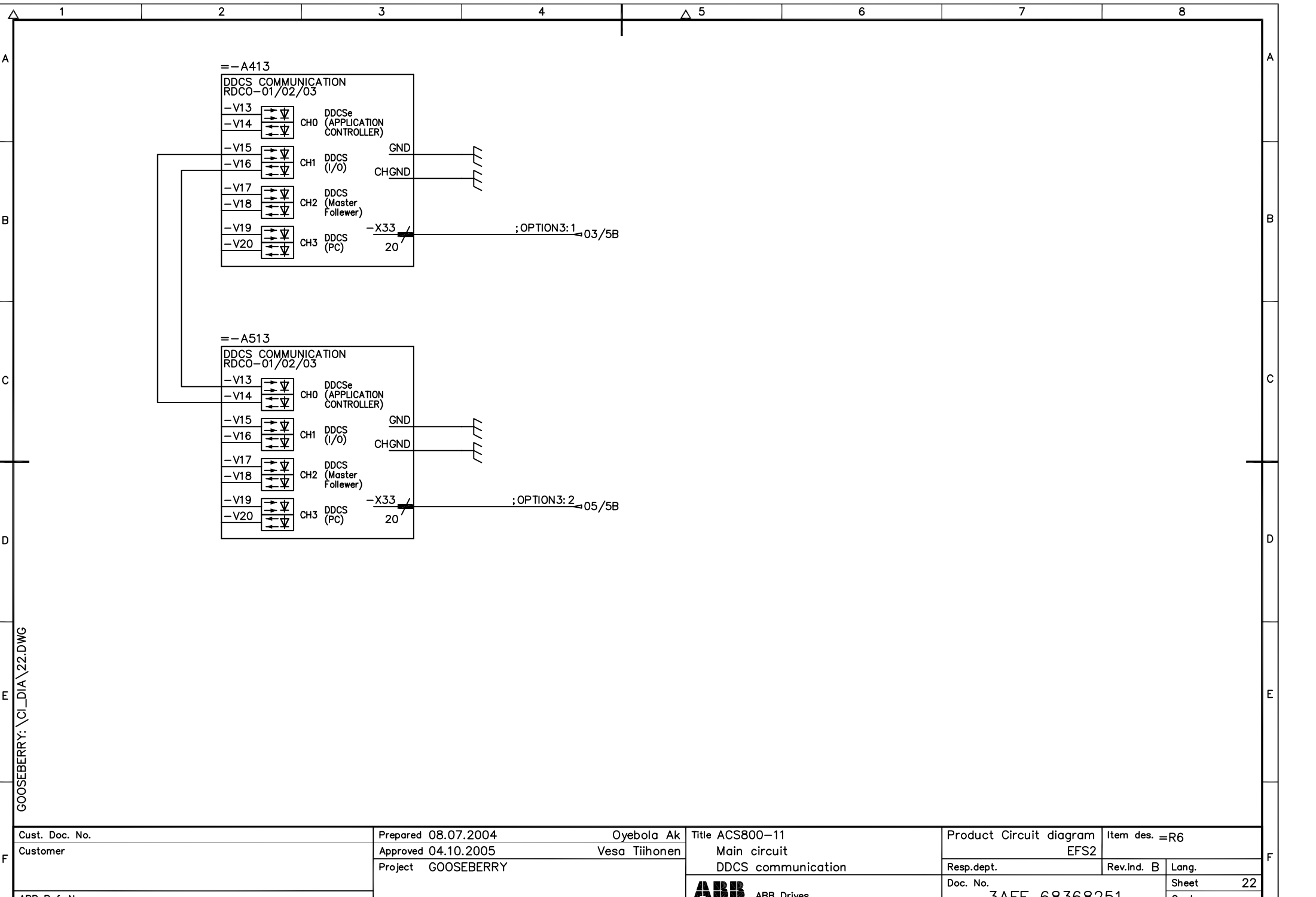
Cust. Doc. No.	Prepared 08.07.2004	Oyebola Ak	Title ACS800-11	Circuit Diagram	Item des. =R6	
	Customer	Approved 04.10.2005	Vesa Tiihonen	Main circuit	EFS2	
	Project GOOSEBERRY		ISU control board	Resp.dept.	Rev.ind. B	Lang.
ABB Ref. No.				Doc. No.		Sheet
						Cont.

ABB Drives

3AFE 68368251

F

We reserve all rights in this document and in the information contained therein. Reproduction, use or disclosure to third parties without express authority is strictly forbidden. Copr. ABB Automation



Cust. Doc. No.	Prepared 08.07.2004 Oyebola Ak	Title ACS800-11	Product Circuit diagram	Item des. =R6
Customer	Approved 04.10.2005 Vesa Tiihonen	Main circuit	DFS2	
	Project GOOSEBERRY	DDCS communication	Resp.dept.	Rev.ind. B Lang.
ABB Ref. No.		ABB ABB Drives	Doc. No.	Sheet 22
			3AFE 68368251	Cont. -