

DRIVEWINDOW LIGHT, DRIVESTUDIO OR DRIVELoader IS VERY SLOW OR STOPS RESPONDING

Description:

The DriveWindow Light, DriveStudio or DriveLoader software is very slow or “Not Responding”.

Answer:

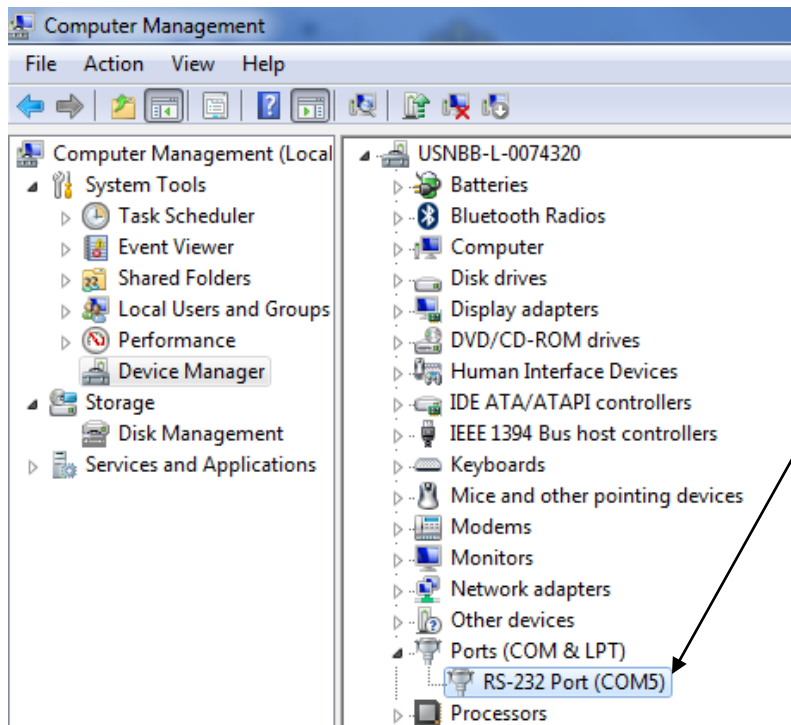
The latency timer for the USB to serial port might need to be adjusted within the computer.

Documents or other reference material:

None

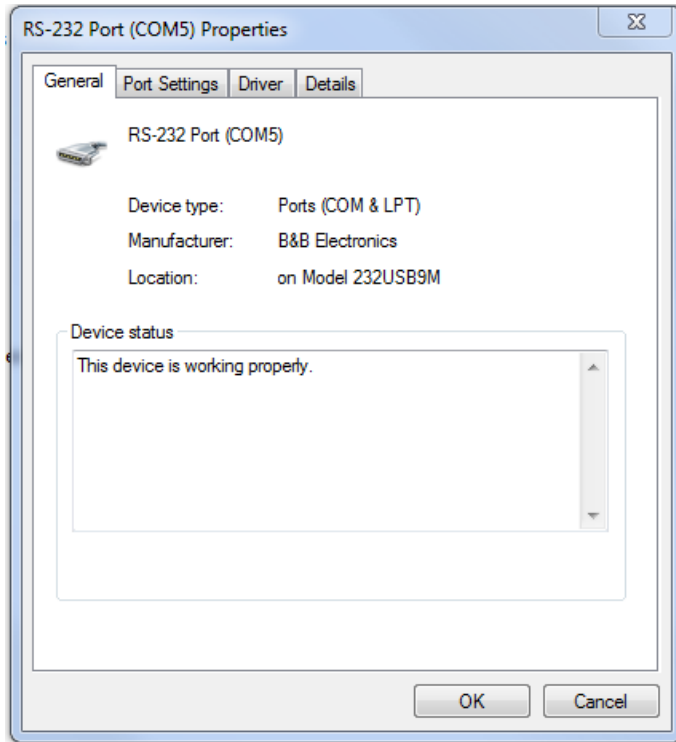
Corrective Actions:

1. Open Device Manager within Windows and locate the USB to Serial port.

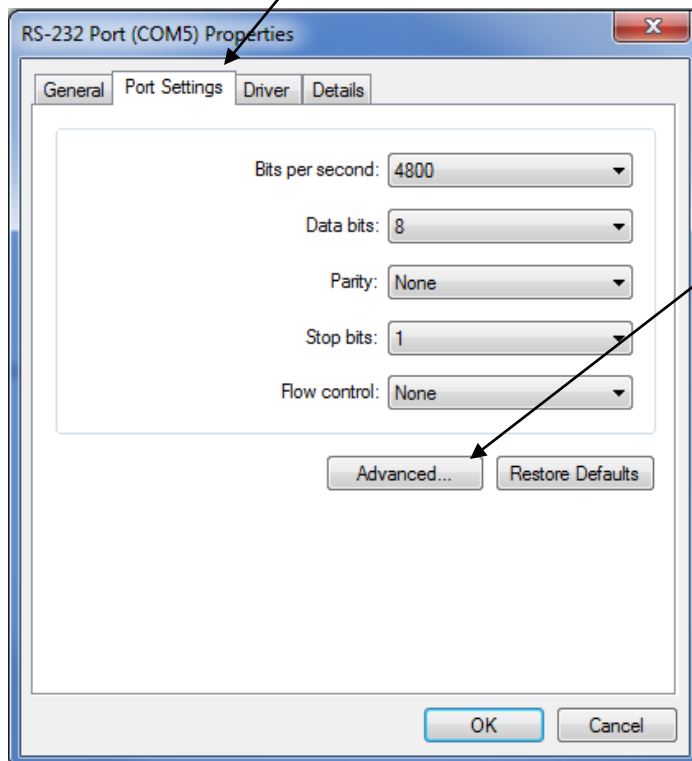


Author: Jeff Fell – Application Eng.		Date: November 2011
External	Industry – Industrial, HVAC	Document #: LVD-EOTN34U-EN
http://www.abb.us/drives		Revision: A
Product Categories: ACS55, ACS150, ACS350, ACS355, ACS310, ACS320, ACS550, ACH550, ACS800, ACS850, ACSM1, DCS800		

2. Double click on the RS-232 Port to open the Properties window.

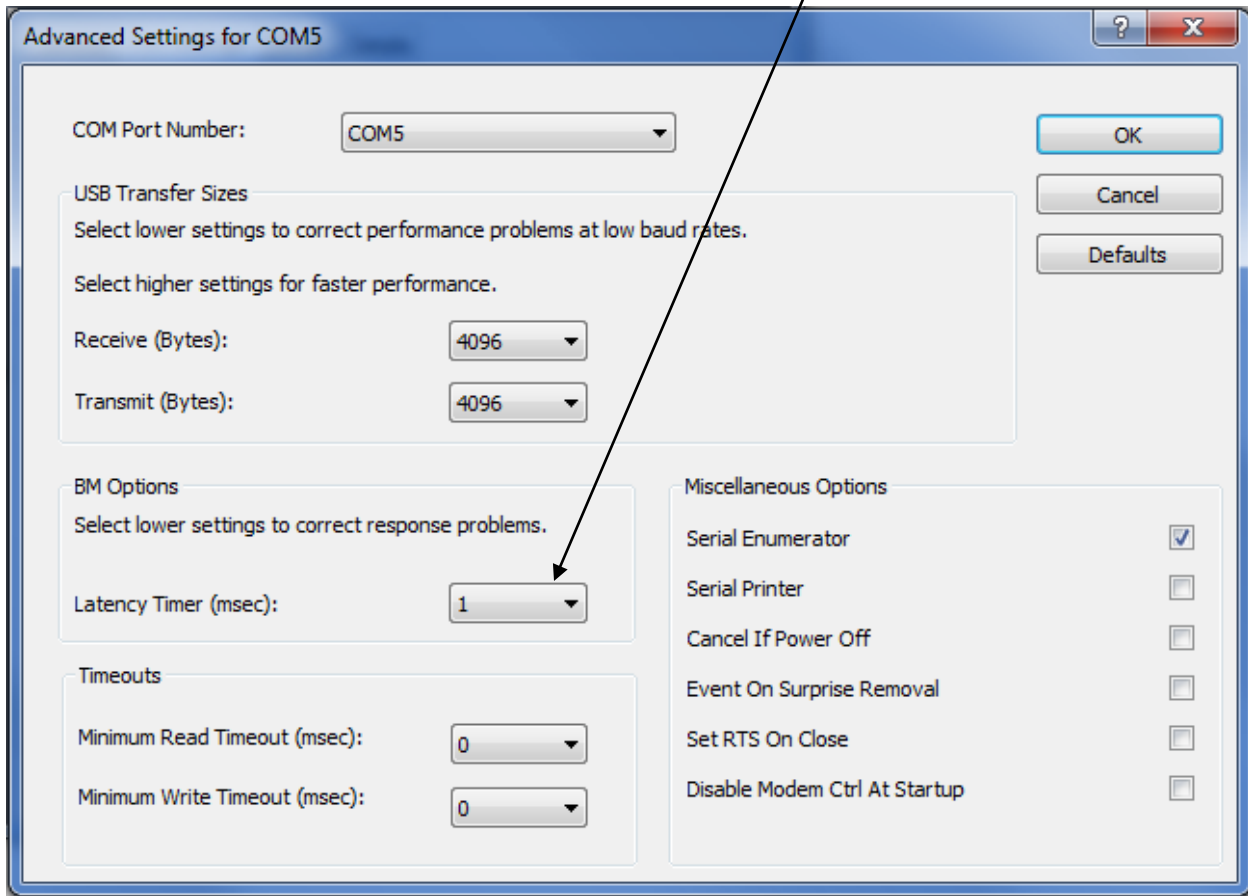


3. Click on Port Settings tab within the Properties window and then click the advanced button.



Author: Jeff Fell – Application Eng.		Date: November 2011
External	Industry – Industrial, HVAC	Document #: LVD-EOTN34U-EN
http://www.abb.us/drives		Revision: A
Product Categories: ACS55, ACS150, ACS350, ACS355, ACS310, ACS320, ACS550, ACH550, ACS800, ACS850, ACSM1, DCS800		

- Set the Latency Timer setting from 16msec to 1msec.



- Close all open windows and try DriveWindow Light, DriveStudio or DriveLoader software again.

Author: Jeff Fell – Application Eng.		Date: November 2011
External	Industry – Industrial, HVAC	Document #: LVD-EOTN34U-EN
http://www.abb.us/drives		Revision: A
Product Categories: ACS55, ACS150, ACS350, ACS355, ACS310, ACS320, ACS550, ACH550, ACS800, ACS850, ACSM1, DCS800		